

HES175938

# SEVILLA MODEL

x2 BEDROOMS

x2 BATHROOMS

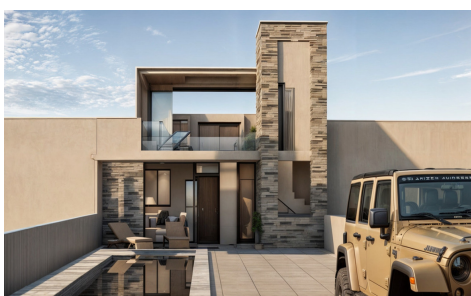
150 M<sup>2</sup> PLOT

70 M<sup>2</sup> LIVING

€ 186.300

## Villa in La Pinilla

€ 186,300



2



2



70m<sup>2</sup>



150m<sup>2</sup>



MODERN NEW BUILD Sevilla-Style Property with 2 BEDS and 2 BATHS, Private Pool and Parking. The Wind Mill is a project built for those who seek a home that embodies tranquility, natural beauty, and modern living. Nestled just outside the tranquil village of La Pinilla, the Sevilla-style property offers contemporary living in a peaceful, secure environment. With plot sizes starting from 15...(Ask for More Details!)